

# 3515 E Columbus Dr

## 3515 E Columbus Dr, Tampa, FL 33605



Listing ID: 30564358  
Status: Active  
Property Type: Industrial For Lease  
Industrial Type: Flex Space, Food Processing  
Contiguous Space: 8,906 - 17,812 SF  
Total Available: 17,812 SF  
Lease Rate: \$4.50 PSF (Annual)  
Base Monthly Rent: \$6,679  
Lease Type: Industrial Gross, NNN  
Short-Term Lease: Yes  
Loading: 1 Dock, 4 Doors  
Ceiling: 18 - 20 ft.  
Drive-In Bays: 3 Bays



### Overview/Comments

REDUCED RENTAL RATE - warehouse storage space available. Ideal for short-term or project-specific construction materials and/or product storage. Space provides 18' clear warehouse ceiling heights, Grade Level loading including two (2) over-sized (25' x 14') drive-in overhead doors.

Property fronts E Columbus Dr to the North and N 36th Street to the East in East Tampa near downtown Tampa & Ybor City.

Contact us for more information or to set up a tour.

### More Information Online

<http://www.commercialexchangeoflouisiana.com/listing/30564358>

### QR Code

Scan this image with your mobile device:



### General Information

Taxing Authority:	Hillsborough County	Gross Building Area:	36,362 SF
Tax ID/APN:	192917ZZZ000005900200A	Building/Unit Size (RSF):	36,362 SF
Zoning:	IG	Usable Size (USF):	17,812 SF
Building Name:	3515 E Columbus Dr	Land Area:	1.22 Acres

Industrial Type Flex Space, Food Processing, Free-Standing, Industrial-Business Park, Manufacturing, Light Industrial, Self Storage, Warehouse/Distribution

### Available Space

Suite/Unit Number:	3515-A	Short-Term Lease:	Yes
Space Available:	17,812 SF	Operating Expenses:	\$1.50 PSF (Annual)
Minimum Divisible:	8,906 SF	Rent Escalators Description:	Market
Maximum Contiguous:	17,812 SF	Rent Concession:	Reduced Rental Rate
Space Subcategory 1:	Warehouse/Distribution	Loading Docks:	1
Space Subcategory 2:	Self Storage	Loading Doors:	4
Space Type:	Relet	Drive In Bays:	3
Date Available:	03/25/2020	Ceiling Height:	20
Lease Rate:	\$4.50 PSF (Annual)	Clear Height:	18
Lease Type:	NNN, Industrial Gross	Eave Height:	16

Space Description REDUCED RENTAL RATE warehouse storage space available. Ideal for project-specific construction materials and/or product storage. Space provides 18' clear warehouse ceiling heights, Grade Level loading including two (2) over-sized (25' x 14') drive-in overhead doors. Property fronts E Columbus Dr to the North and N 36th Street to the East in East Tampa near downtown Tampa & Ybor City. Contact us for more information or to set up a tour.

### Area & Location

Property Located Between:	E Columbus Dr & 36th Street	Airports:	Tampa International (TIA)
Highway Access:	Direct Access to I-4	Area Description:	East Tampa industrial submarket

Site Description East Tampa industrial submarket near downtown Tampa with immediate access to I-4, I-75 and all major thoroughfares in the Tampa Bay market area.

**Building Related**

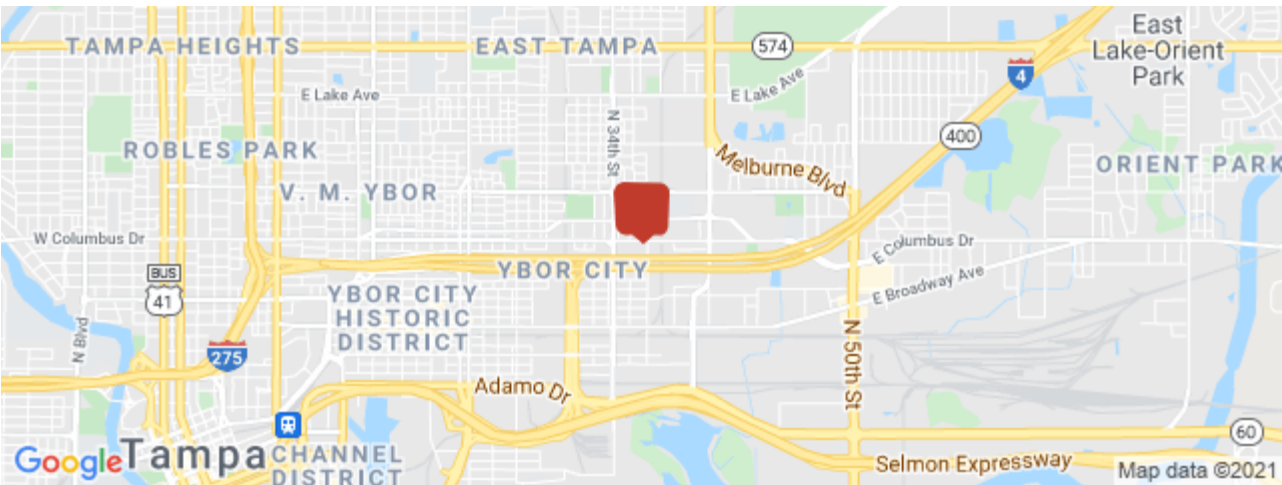
Tenancy:	Multiple Tenants	Passenger Elevators:	0
Total Number of Buildings:	2	Freight Elevators:	0
Number of Stories:	1	Sprinklers:	Wet
Property Condition:	Fair	Amps:	8,000
Year Built:	1965	X-Phase:	3
Construction/Siding:	Metal Siding, Steel Frame	Heat Type:	Electricity, Natural Gas, Propane
Exterior Description:	Concrete Block & Metal	Lighting:	Metal Halide
Parking Type:	Surface		

**Land Related**

Zoning Description:	Industrial General	Water Service:	Municipal
Lot Frontage:	I-4 & Columbus Dr	Sewer Type:	Municipal

**Location**

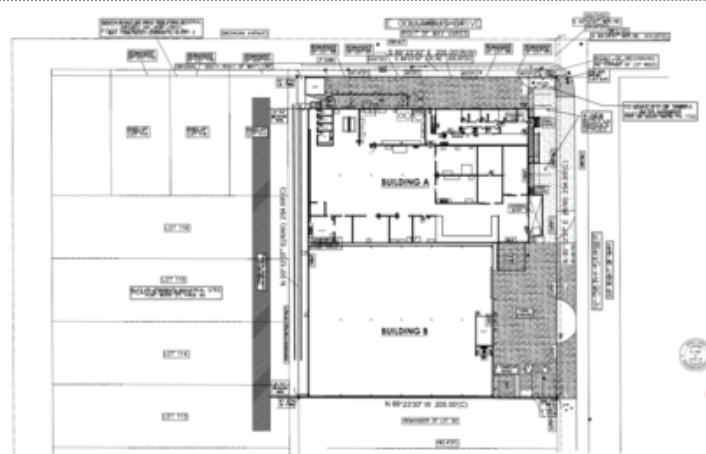
Address:	3515 E Columbus Dr, Tampa, FL 33605
County:	Hillsborough
MSA:	Tampa-St. Petersburg-Clearwater



**Property Images**



Photo1



Screen Shot 2020-03-25 at 1.23.30 PM



Photo3\_Aerial\_downtown



Photo4\_interiorwarehouse



Photo5\_power

## Property Contacts



### Jeffrey M Lamm

Lamm Properties Inc.

813-300-5266 [M]

813-300-5266 [O]

jeff.lamm@lammproperties.net