

701 W Platt Street

701 W Platt St, Tampa, FL 33606



Listing ID: 30564349
Status: Active
Property Type: Office For Lease
Office Type: Office Building
Contiguous Space: 1,336 SF
Total Available: 1,336 SF
Lease Rate: \$19 PSF (Annual)
Base Monthly Rent: \$2,115
Lease Type: NNN



Overview/Comments

Reduced Rental Rate + Free Rent Negotiable

Highly sought after office/storefront building with frontage visibility on W. Platt Street in Hyde Park/South Tampa near Downtown. Located in close proximity to National & Regional Retailers (Publix, Walgreens, Suntrust Bank, Bank of America, UPS store, Dry Cleaners), Medical facilities, Commercial Printers, Fitness and various office & retail users in Hyde Park near downtown Tampa.

More Information Online

<http://www.commercialexchangeoflouisiana.com/listing/30564349>

QR Code

Scan this image with your mobile device:



General Information

Tax ID/APN:	1829244ZV000005000080A	Building/Unit Size (RSF):	1,336 SF
Office Type:	Office Building, Other	Usable Size (USF):	1,336 SF
Class of Space:	Class B	Land Area:	0.17 Acres
Gross Building Area:	3,753 SF		

Available Space

Suite/Unit Number:	701	Date Available:	01/29/2020
Suite Floor/Level:	1st	Lease Rate:	\$19 PSF (Annual)
Space Available:	1,336 SF	Lease Type:	NNN
Minimum Divisible:	1,336 SF	Offices:	2
Maximum Contiguous:	1,336 SF	Parking Spaces:	4
Space Subcategory 1:	Office Showroom	Operating Expenses:	\$5 PSF (Annual)
Space Subcategory 2:	High-Tech	Rent Escalators:	Step-Up Lease
Space Type:	Relet	Rent Concession:	Free Rent Negotiable, Reduced Rental Rate

Space Description Reduced Rental Rate + Free Rent Negotiable LOCATION. LOCATION. LOCATION - 1,336 SF office-storefront space with direct frontage visibility on W. Platt Street in Hyde Park/South Tampa near Downtown. Space provides a large "loft-like" open area with high ceilings and ceiling fans w/ lighting, 2-4 partitioned offices with storage, two (2) ADA restrooms, New HVAC, and a charming Hyde Park location within walking distance of local & national retailers, medical offices, tanning salon, tutoring company, and more. This location can't be beaten!

Area & Location

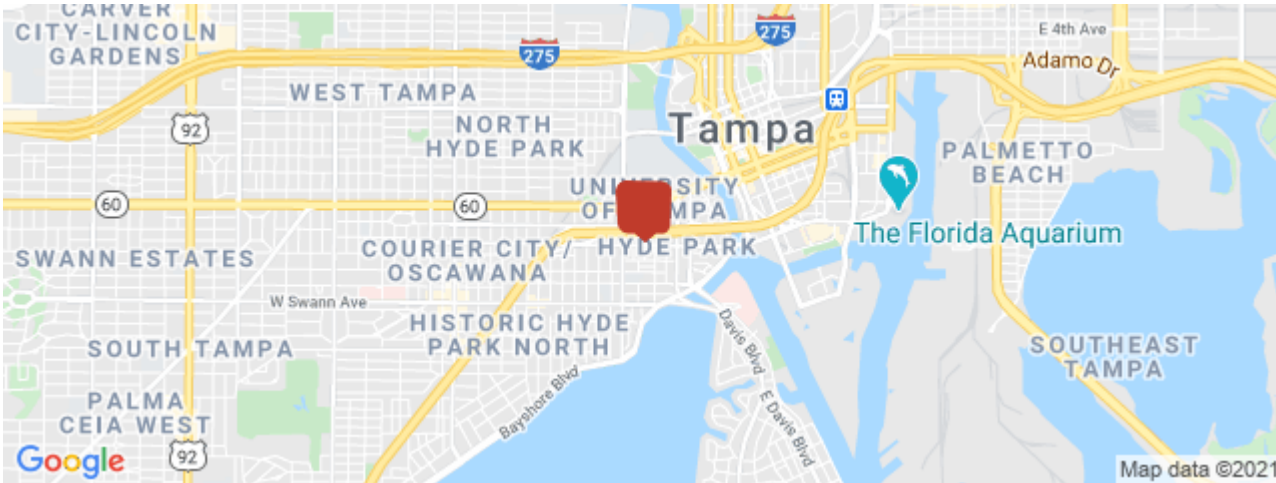
Property Visibility:	Excellent	Airports:	Tampa International Airport (TIA)
Highway Access:	Easy access to the Selmon Crosstown Expressway	Site Description:	Hyde Park/South Tampa location near downtown.

Building Related

Passenger Elevators: 0
Freight Elevators: 0

Location

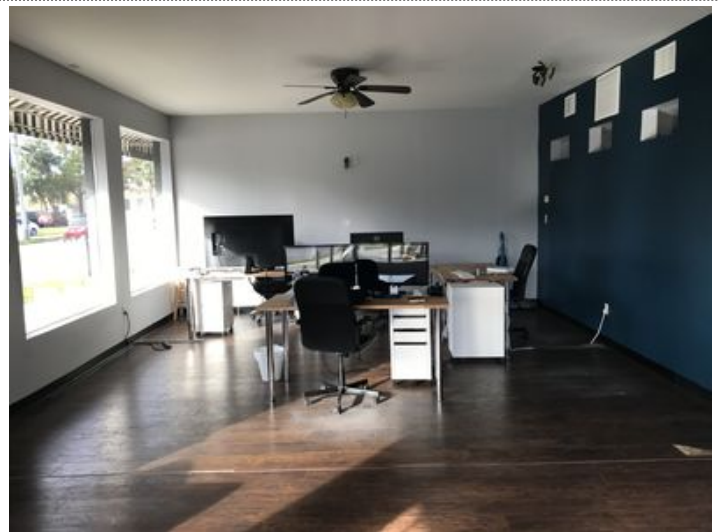
Address: 701 W Platt St, Tampa, FL 33606
County: Hillsborough
MSA: Tampa-St. Petersburg-Clearwater



Property Images



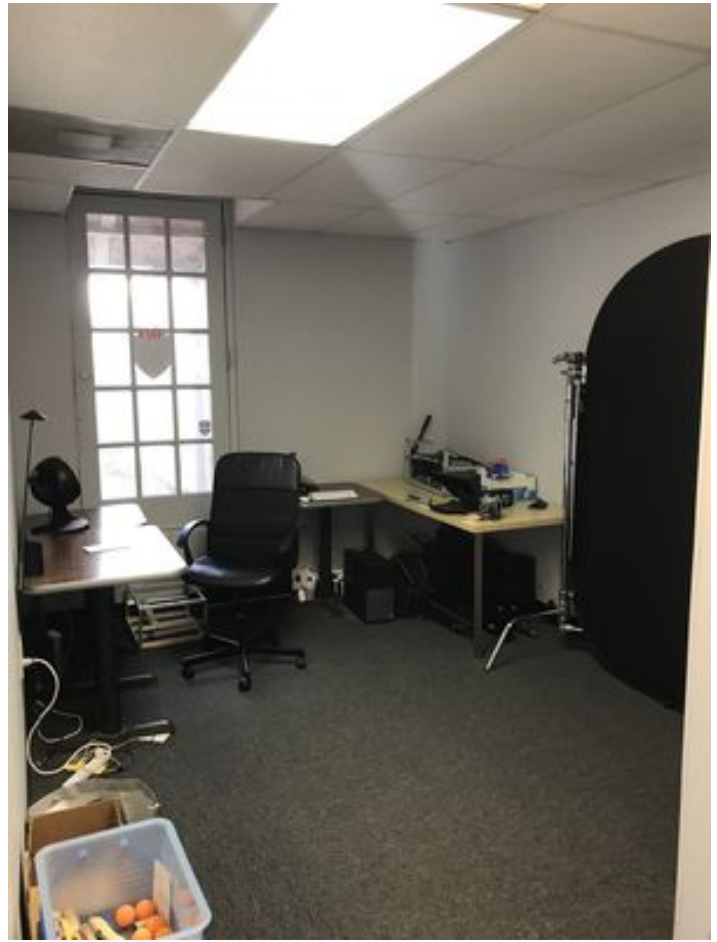
IMG_9575



IMG_9588



IMG_9571



IMG_9580



IMG_9582

Property Contacts



Jeffrey M Lamm

Lamm Properties Inc.

813-300-5266 [M]

813-300-5266 [O]

jeff.lamm@lammproperties.net