

# 701 W Platt Street

## 701 W Platt St, Tampa, FL 33606



Listing ID: 30564349  
 Status: Active  
 Property Type: Office For Lease  
 Office Type: Office Building  
 Contiguous Space: 1,148 - 2,484 SF  
 Total Available: 2,484 SF  
 Lease Rate: \$21 PSF (Annual)  
 Base Monthly Rent: \$2,009 - 2,338  
 Lease Type: Net Lease, NNN



### Overview/Comments

Highly sought after office/storefront building with frontage visibility on W. Platt Street in Hyde Park/South Tampa near Downtown. Located in close proximity to National & Regional Retailers (Publix, Walgreens, Suntrust Bank, Bank of America, UPS store, Dry Cleaners), Medical facilities, Commercial Printers, Fitness and various office & retail users in Hyde Park near downtown Tampa.

### More Information Online

<http://www.commercialexchangeoflouisiana.com/listing/30564349>

### QR Code

Scan this image with your mobile device:



### General Information

Tax ID/APN:	1829244ZV000005000080A	Building/Unit Size (RSF):	1,336 SF
Office Type:	Office Building, Other	Usable Size (USF):	1,336 SF
Class of Space:	Class B	Land Area:	0.17 Acres
Gross Building Area:	3,753 SF		

### Available Space

Suite/Unit Number:	701	Date Available:	01/29/2020
Suite Floor/Level:	1st	Lease Rate:	\$21 PSF (Annual)
Space Available:	1,336 SF	Lease Type:	NNN
Minimum Divisible:	1,336 SF	Conference Rooms:	1
Maximum Contiguous:	2,484 SF	Offices:	3
Space Subcategory 1:	Office Showroom	Parking Spaces:	0
Space Subcategory 2:	High-Tech	Operating Expenses:	\$5 PSF (Annual)
Space Type:	Relet		

Space Description LOCATION. LOCATION. LOCATION. Office/storefront space w/ direct frontage visibility on W. Platt Street in Hyde Park/South Tampa near Downtown.

### Available Space

Suite/Unit Number:	705	Space Subcategory 2:	High-Tech
Suite Floor/Level:	1st	Space Type:	Relet
Space Available:	1,148 SF	Date Available:	10/26/2020
Minimum Divisible:	1,148 SF	Lease Rate:	\$21 PSF (Annual)
Maximum Contiguous:	2,484 SF	Lease Type:	Net Lease
Space Subcategory 1:	Office Showroom	Rent Concession:	Free Rent Negotiable

Space Description 1,148 SF space contiguous to 2,484 SF ideal for a business looking for a Hyde Park/South Tampa office storefront (near downtown) location with frontage visibility on a highly trafficked thoroughfare.

## Area & Location

Property Visibility: Excellent

## Building Related

Passenger Elevators: 0  
Freight Elevators: 0

## Location

Address: 701 W Platt St, Tampa, FL 33606  
County: Hillsborough  
MSA: Tampa-St. Petersburg-Clearwater



## Property Images



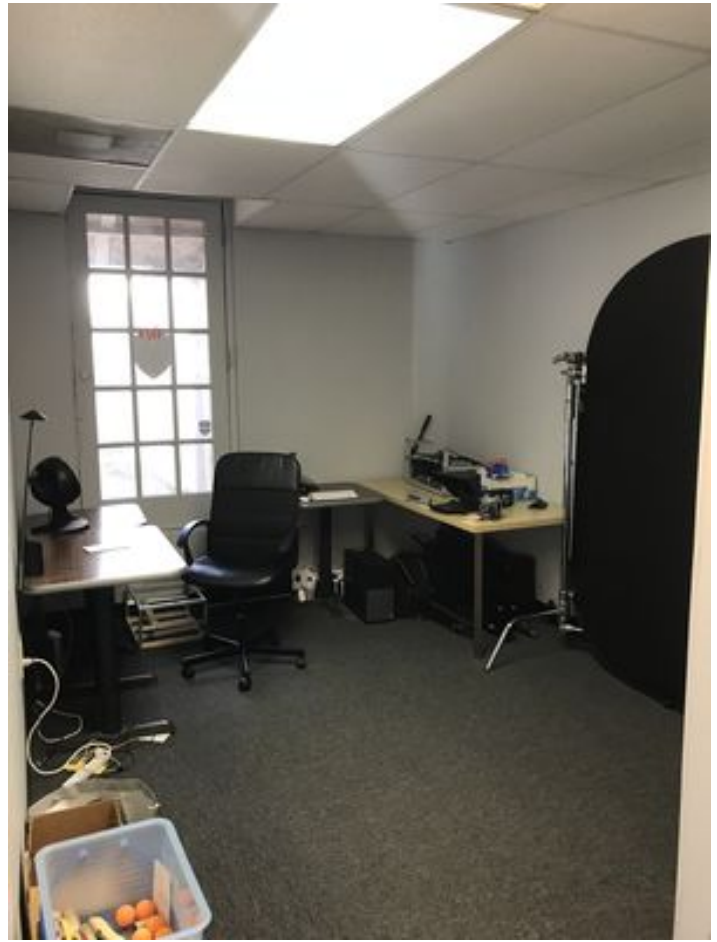
IMG\_9575



IMG\_9588



IMG\_9571



IMG\_9580



IMG\_9582

## Property Contacts

---



### Jeffrey M Lamm

Lamm Properties Inc.

813-300-5266 [M]

813-300-5266 [O]

jeff.lamm@lammproperties.net