

607 W Dr Martin Luther King Jr. Blvd

607 W Dr Martin Luther King Jr Blvd, Tampa, FL 33603



Listing ID: 30630116
Status: Active
Property Type: Office For Lease
Office Type: High-Tech, Medical
Contiguous Space: 3,406 SF
Total Available: 3,406 SF
Lease Rate: \$21 PSF (Annual)
Base Monthly Rent: \$5,960
Lease Type: Modified Gross



Overview/Comments

Medical and Legal Office complex with direct frontage visibility on Dr. Martin Luther King Jr. Blvd located between the lighted intersections of Florida Ave & North Blvd in Tampa Heights.

More Information Online

<http://www.commercialexchange.com/listing/30630116>



QR Code

Scan this image with your mobile device:

General Information

Taxing Authority:	Hillsborough County	Gross Building Area:	6,278 SF
Tax ID/APN:	1829014GN000010000210A	Building/Unit Size (RSF):	3,406 SF
Office Type:	High-Tech, Medical, Office Building	Usable Size (USF):	3,406 SF
Building Name:	Medical & Legal Office Complex	Land Area:	0.50 SF
Class of Space:	Class B		

Available Space

Suite/Unit Number:	103	Lease Rate:	\$21 PSF (Annual)
Suite Floor/Level:	1st	Lease Type:	Modified Gross
Space Available:	3,406 SF	Conference Rooms:	1
Minimum Divisible:	3,406 SF	Offices:	7
Maximum Contiguous:	3,406 SF	Kitchen/Breakroom:	Yes
Space Subcategory 1:	Medical	Parking Spaces:	11
Space Subcategory 2:	Office Building	Rent Escalators:	Step-Up Lease
Space Type:	Relet	Rent Concession:	Free Rent available
Date Available:	08/01/2020		

Space Description "Plug & Play" MRI Diagnostic Center or Medical/Diagnostic Office with heavy power purposed specifically for MRI or X-Ray Diagnostic uses. Office area provides seven (7) partitioned offices or diagnostic rooms, large 20' x 20' patient waiting/lobby area, multiple large open areas for workstations, X-ray room, dark room, server room, client/patient safe areas/privacy rooms, full kitchen, storage/utility/power room, and 11 in-front parking spaces plus overflow parking available. *MONUMENT AND BUILDING SIGNAGE AVAILABLE

Area & Location

Property Located Between:	Florida Ave & North Blvd	Highway Access:	I-275 to I-4
Property Visibility:	Excellent	Airports:	Tampa International Airport (TIA)

Building Related

Total Number of Buildings:	2	Year Built:	1990
Number of Stories:	1	Construction/Siding:	Stucco

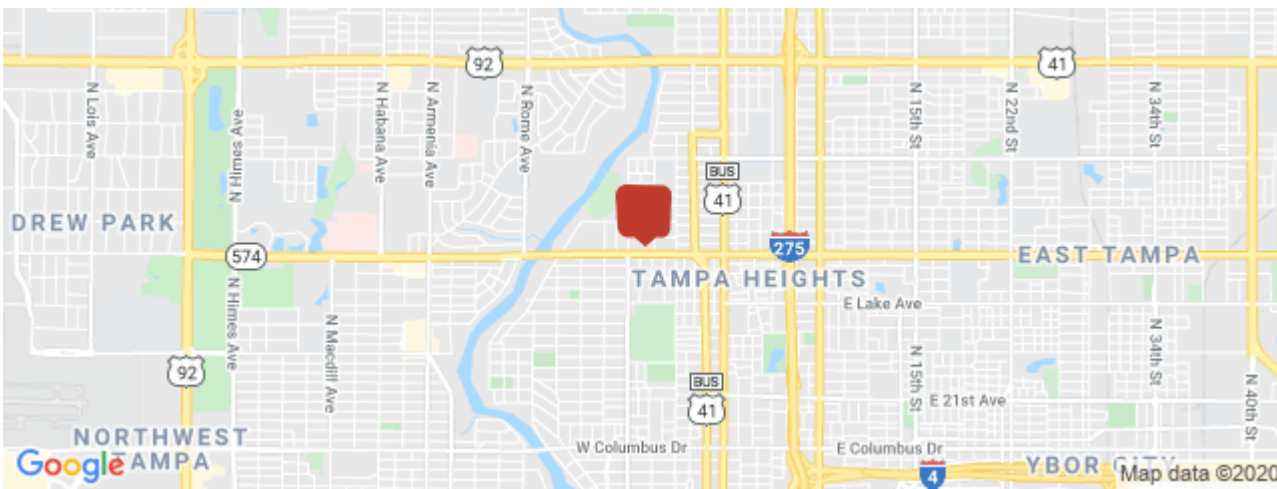
Exterior Description:	Masonry or Concrete Frame, Stucco	Freight Elevators:	0
Parking Type:	Surface	Heat Type:	Electricity
Parking Description:	11 Parking spaces plus overflow	Heat Source:	Central
Total Parking Spaces:	11	Air Conditioning:	Package Unit
Passenger Elevators:	0	Internet Access:	Cable, Satellite, T1/T3, Fiber Optic

Land Related

Zoning Description:	Zone: SH-CG Use Code: TF5B
Water Service:	Municipal
Sewer Type:	Municipal

Location

Address:	607 W Dr Martin Luther King Jr Blvd, Tampa, FL 33603
County:	Hillsborough
MSA:	Tampa-St. Petersburg-Clearwater



Property Images



607MLK_buildingExterioPhoto



607MLK_BuildingExteriorPhoto2



IMG_0237



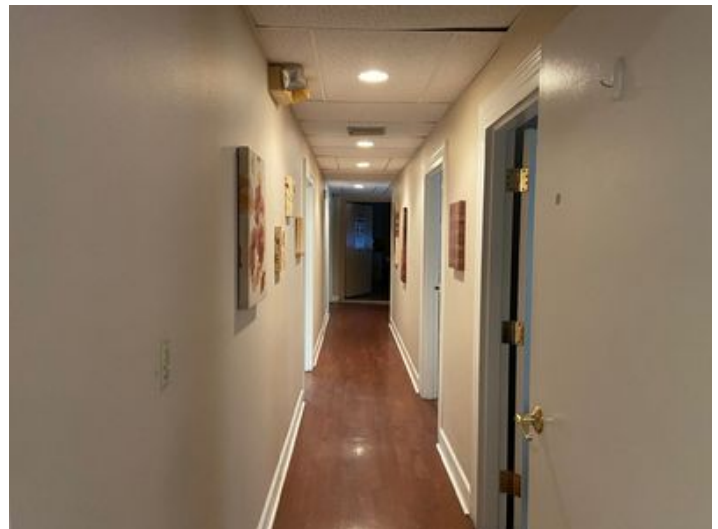
IMG_0223



IMG_0236



IMG_0222



IMG_0224



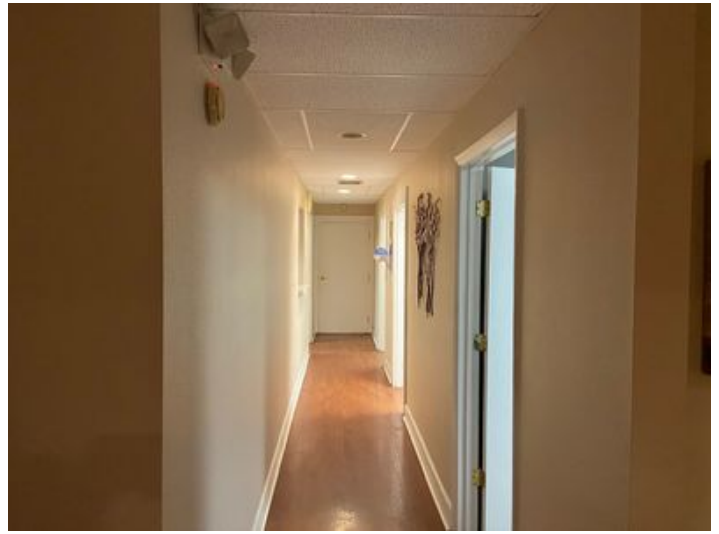
IMG_0226



IMG_0229



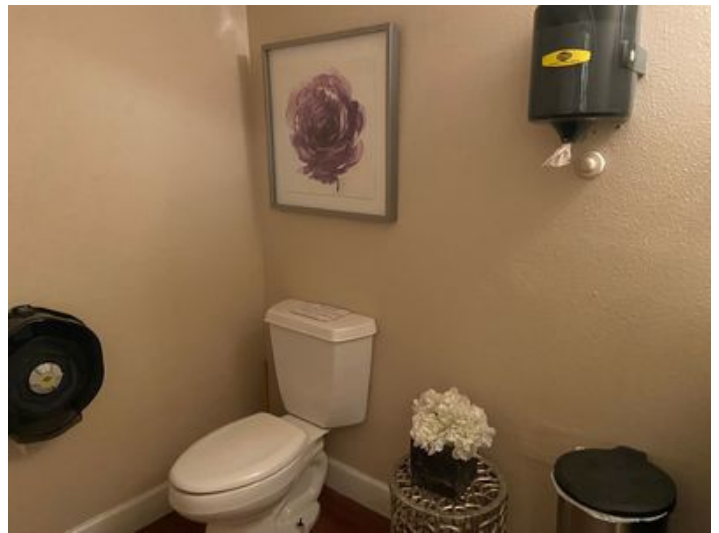
IMG_0228



IMG_0231



IMG_0227



IMG_0234



IMG_0233



IMG_0230

Property Contacts



Jeffrey M Lamm

Lamm Properties Inc.
813-300-5266 [M]
813-300-5266 [O]
jeff.lamm@lammproperties.net