

3515 E Columbus Dr

3515 E Columbus Dr, Tampa, FL 33605



Listing ID: 30564358
Status: Active
Property Type: Industrial For Lease
Industrial Type: Flex Space, Food Processing
Contiguous Space: 36,362 SF
Total Available: 36,362 SF
Lease Rate: \$5.95 PSF (Annual)
Base Monthly Rent: \$18,029
Lease Type: NNN
Loading: 1 Dock, 5 Doors
Ceiling: 18 - 20 ft.
Office SF: 1,480 SF
Drive-In Bays: 3 Bays



Overview/Comments

36,362 SF Industrial Light Manufacturing/Warehouse property situated on 1.2-acres (53,103 SF of land area) available in an Opportunity Zone for long-term lease. Space provides 1,480 SF of office area, 18' clear warehouse ceiling heights, 8000 Amp/3-phase power, Dock High & Grade Level loading (Dock High & Ramp to Grade Platform, two (2) over-sized (25' x 14') drive-in loading doors, and rear rollup doors for side loading).

More Information Online

<http://www.commercialexchangeoflouisiana.com/listing/30564358>

QR Code

Scan this image with your mobile device:



General Information

Taxing Authority:	Hillsborough County	Gross Building Area:	36,362 SF
Tax ID/APN:	192917ZZZ000005900200A	Building/Unit Size (RSF):	36,362 SF
Zoning:	IG	Usable Size (USF):	17,812 SF
Building Name:	3515 E Columbus Dr	Land Area:	1.22 Acres

Industrial Type Flex Space, Food Processing, Free-Standing, Industrial-Business Park, Manufacturing, Light Industrial, Self Storage, Warehouse/Distribution

Available Space

Suite/Unit Number:	3515	Operating Expenses:	\$1.50 PSF (Annual)
Space Available:	36,362 SF	Rent Escalators Description:	Market
Minimum Divisible:	36,362 SF	Rent Concession:	Negotiable
Maximum Contiguous:	36,362 SF	Office SF:	1,480 SF
Space Subcategory 1:	Warehouse/Distribution	Loading Docks:	1
Space Subcategory 2:	Manufacturing	Loading Doors:	5
Space Type:	Relet	Drive In Bays:	3
Date Available:	03/25/2020	Ceiling Height:	20
Lease Rate:	\$5.95 PSF (Annual)	Clear Height:	18
Lease Type:	NNN	Eave Height:	16

Space Description 36,362 SF Industrial Light Manufacturing/Warehouse property situated on 1.2-acres (53,103 SF of land area) available in an Opportunity Zone for long-term lease. Space provides 1,480 SF of office area, 18' clear warehouse ceiling heights, 8000 Amp/3-phase power, Dock High & Grade Level loading (Dock High & Ramp to Grade Platform, two (2) over-sized (25' x 14') drive-in loading doors, and rear roll-up doors for sideloading).

Area & Location

Property Located Between: E Columbus Dr & 36th Street
Highway Access: Direct Access to I-4
Airports: Tampa International (TIA)

Site Description East Tampa industrial submarket near downtown Tampa with immediate access to I-4, I-75 and all major thoroughfares in the Tampa Bay market area.

Building Related

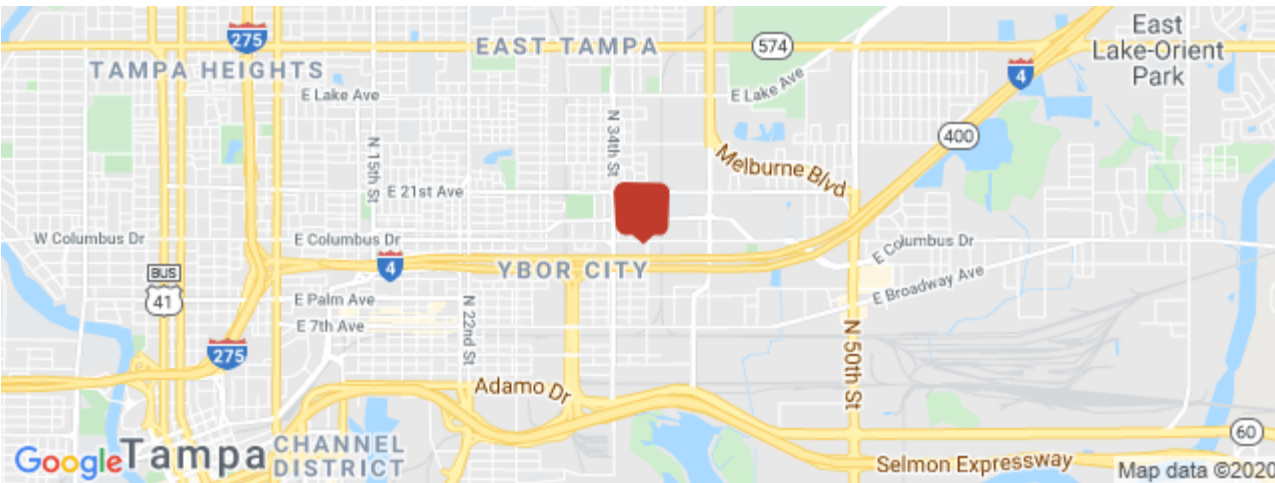
Tenancy:	Single Tenant	Parking Type:	Surface
Total Number of Buildings:	2	Passenger Elevators:	0
Number of Stories:	1	Freight Elevators:	0
Office Space SF:	1,480 SF	Sprinklers:	Wet
Property Condition:	Average	Amps:	8,000
Year Built:	1965	X-Phase:	3
Construction/Siding:	Metal Siding, Steel Frame	Heat Type:	Electricity, Natural Gas, Propane
Exterior Description:	Concrete Block & Metal	Lighting:	Metal Halide

Land Related

Zoning Description:	Industrial General	Water Service:	Municipal
Lot Frontage:	I-4 & Columbus Dr	Sewer Type:	Municipal

Location

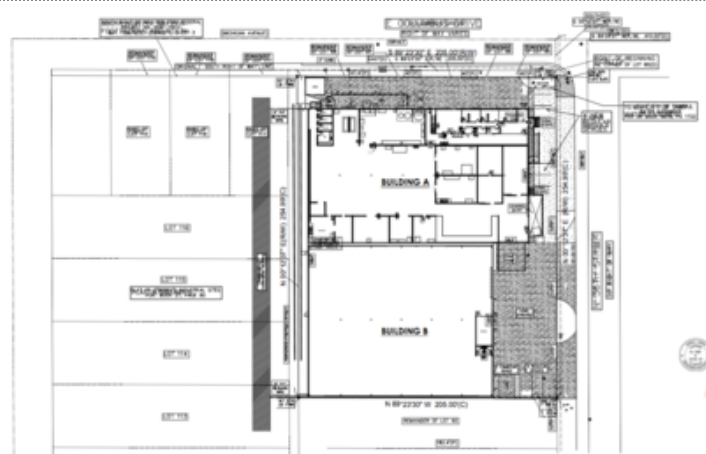
Address: 3515 E Columbus Dr, Tampa, FL 33605
 County: Hillsborough
 MSA: Tampa-St. Petersburg-Clearwater



Property Images



Photo1



Screen Shot 2020-03-25 at 1.23.30 PM



Photo3_Aerial_downtown



Photo4_interiorwarehouse



Photo5_power

Property Contacts



Jeffrey M Lamm

Lamm Properties Inc.
813-300-5266 [M]
813-300-5266 [O]
jeff.lamm@lammproperties.net