



## 711 W Platt St

711 W Platt St, Tampa, FL 33606



**Jeff Lamm**

Lamm Properties, Inc.

1108 N Franklin St, Tampa, FL 33602

[jeff.lamm@lammproperties.net](mailto:jeff.lamm@lammproperties.net)

(813) 300-5266



## 711 W Platt St

\$21.00 /SF/Yr

Office/Storefront building with direct frontage visibility on West Platt Street in Hyde Park / South Tampa near downtown....

- Heavy trafficked thoroughfare in Hyde Park/South Tampa
- Frontage visibility on West Platt Street
- 13,255+ Cars Daily (2018)
- Population of 240,000 within 5-mile radius



Rental Rate: \$21.00 /SF/Yr

Property Type: Retail

Property Sub-type: Storefront Retail/Office

Gross Leasable Area: 4,056 SF

Year Built: 1952

Walk Score ®: 87 (Very Walkable)

Transit Score ®: 49 (Some Transit)

Rental Rate Mo: \$1.75 USD/SF/Mo

## 1st Floor Ste 711

Space Available	1,569 SF
Rental Rate	\$21.00 /SF/Yr
Date Available	November 04, 2019
Service Type	Triple Net
Built Out As	Professional Services
Space Type	Relet
Space Use	Retail
Lease Term	3 - 5 Years

1,569 SF Office/Storefront end cap space with frontage visibility on West Platt Street.

---

## Major Tenant Information

---

Tenant	SF Occupied	Lease Expired
Disciplined Minds Tutoring	-	



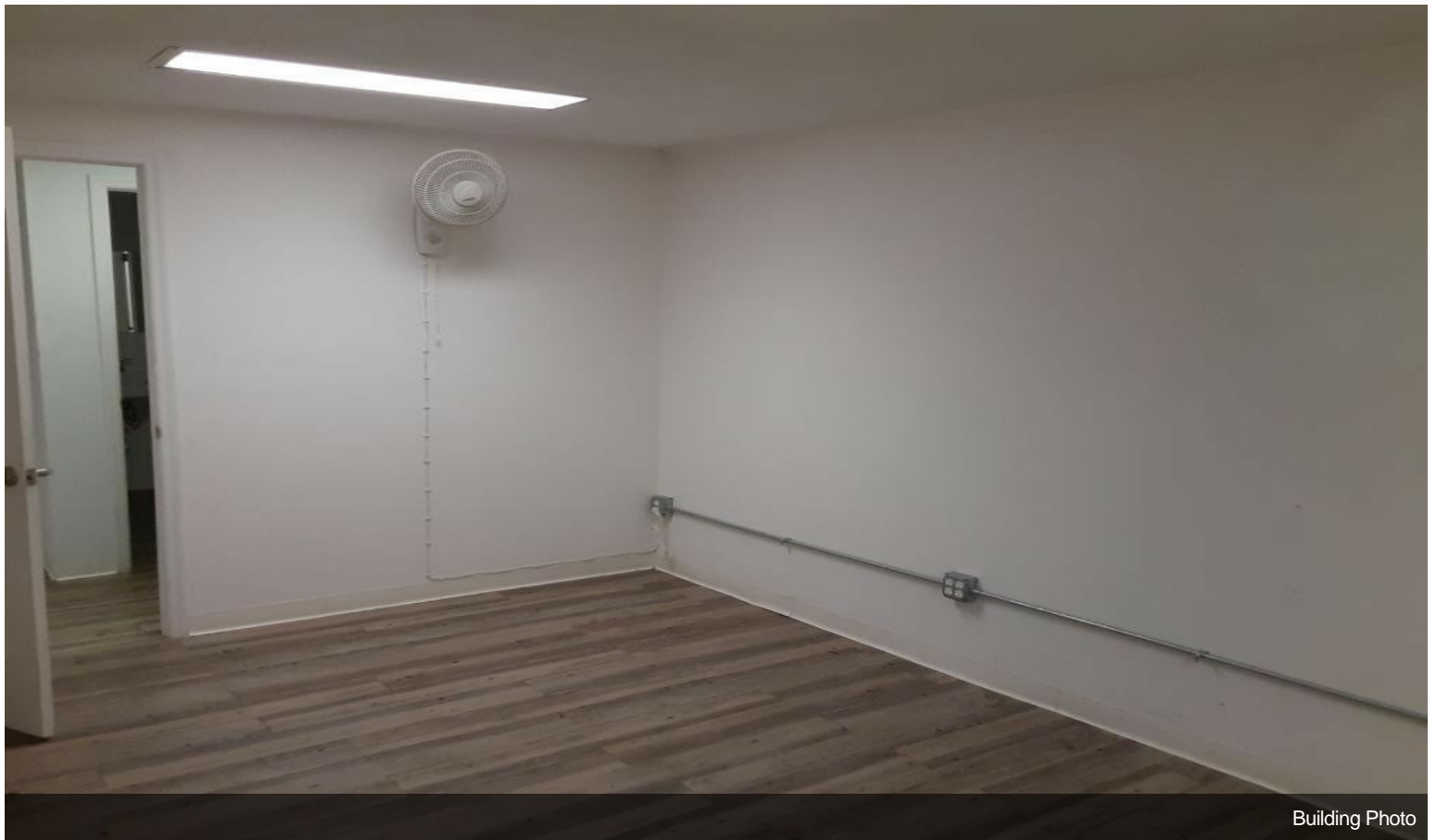
## 711 W Platt St, Tampa, FL 33606

Office/Storefront building with direct frontage visibility on West Platt Street in Hyde Park / South Tampa near downtown.

# Property Photos



Building Photo



Building Photo